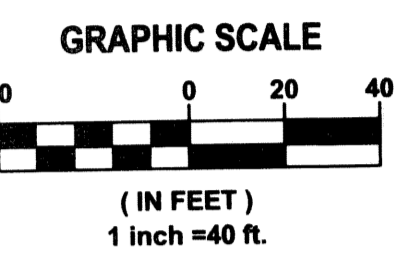
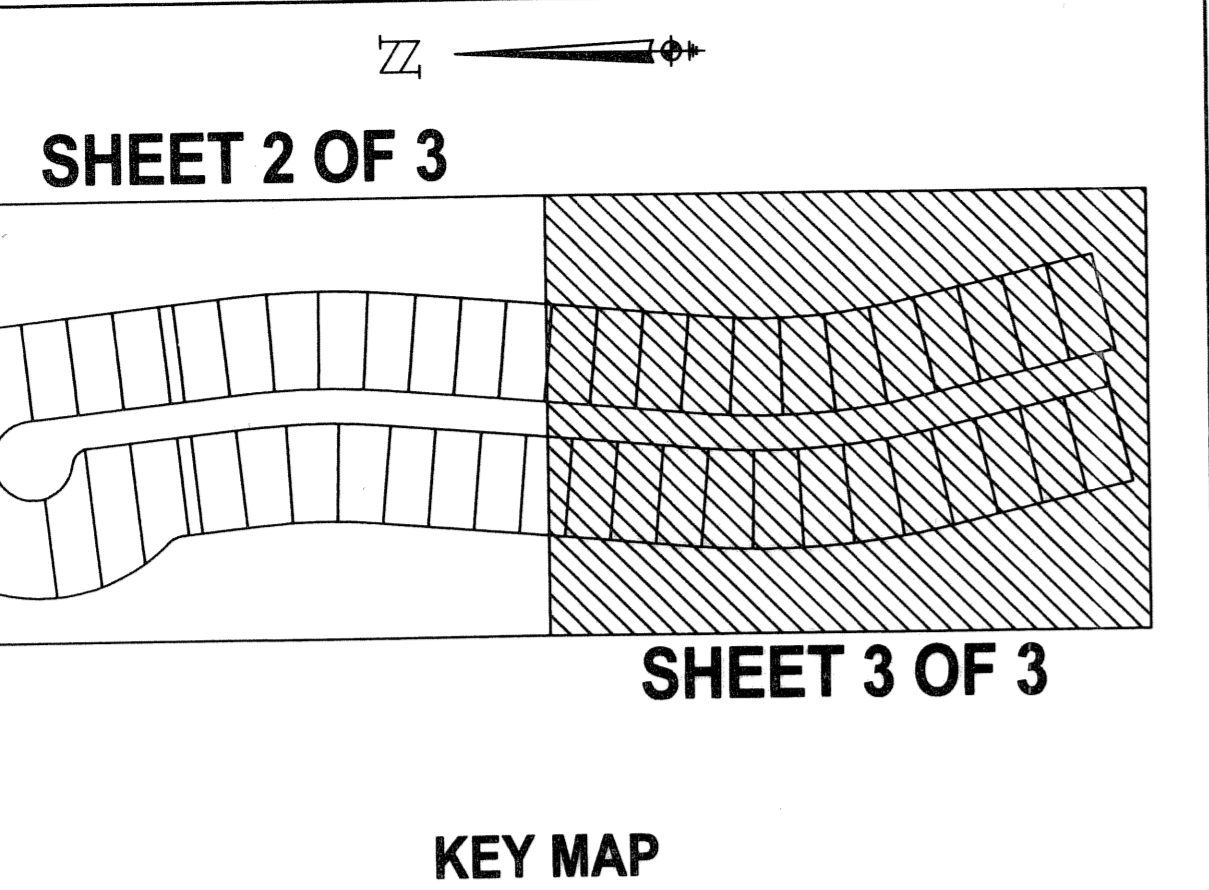


STATE OF FLORIDA
COUNTY OF PALM BEACH
This plat was filed for
record at _____ M. this day
of _____, 2005 and duly
recorded in Plat Book No. _____
on Pages _____ thru _____
Sharon R. Beck
Clerk and Comptroller
By _____ D.C.

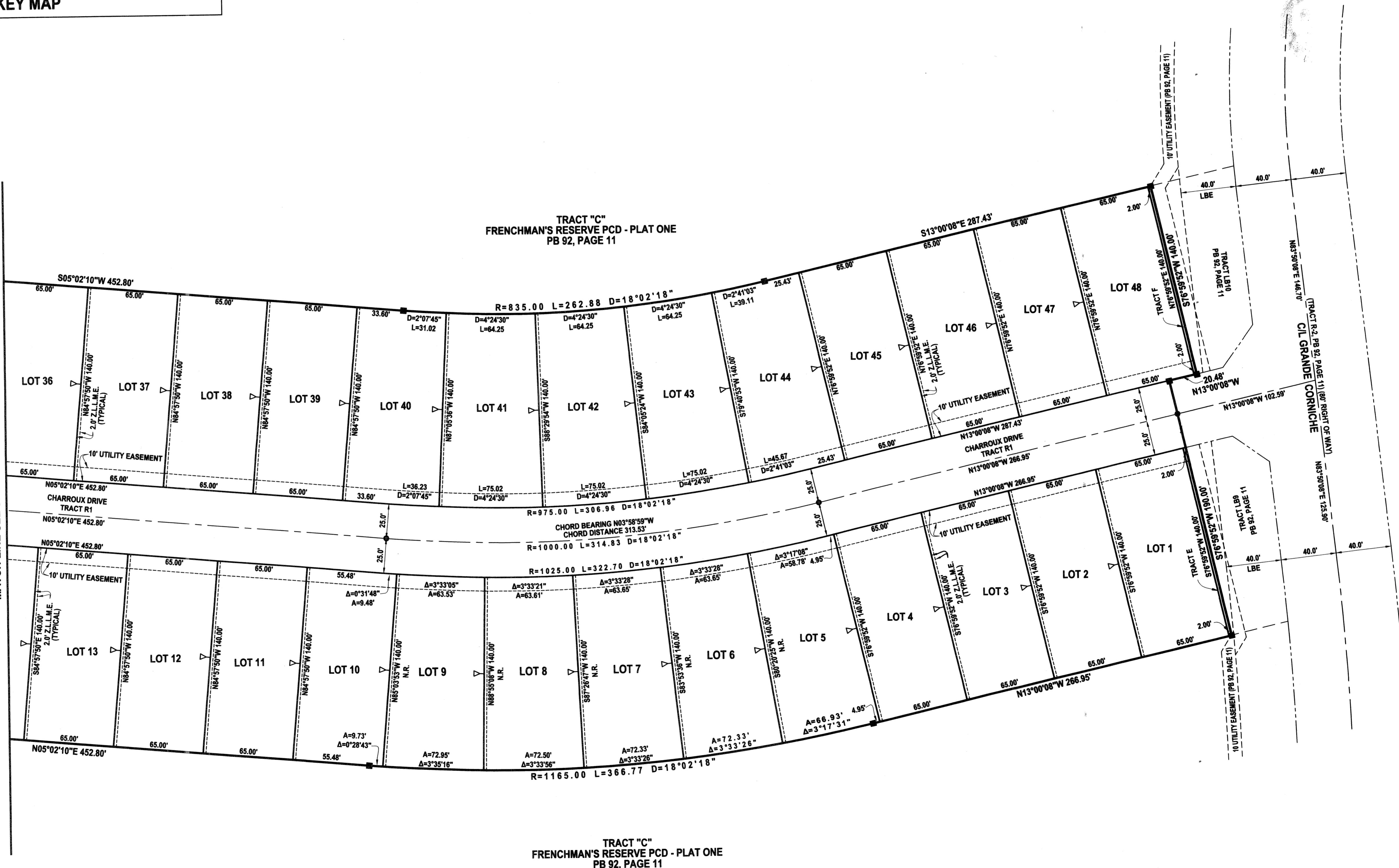


FRENCHMAN'S RESERVE POD C

BEING A REPLAT OF A PORTION TRACT C, FRENCHMAN'S RESERVE PCD - PLAT ONE, AS RECORDED IN
PLAT BOOK 92, PAGES 11 THROUGH 20, PUBLIC RECORDS OF PALM BEACH COUNTY, FLORIDA
LYING IN SECTION 31, TOWNSHIP 41 SOUTH, RANGE 43 EAST
CITY OF PALM BEACH GARDENS, PALM BEACH COUNTY, FLORIDA
SHEET 3 OF 3 APRIL 2005



MATCH LINE SEE SHEET 2 OF 3



TRACT "C"
FRENCHMAN'S RESERVE PCD - PLAT ONE
PB 92, PAGE 11

TRACT "C"
FRENCHMAN'S RESERVE PCD - PLAT ONE
PB 92, PAGE 11

LIDBERG LAND SURVEYING, INC.
675 West Indiantown Road, Suite 200
Jupiter, Florida 33458 TEL 561-746-8454
LB 4431

CAD K:\AUTOCAD2000\314143\04-133\DWG\04-133-306.DWG			
FLD	B.D.D.	FB 454	FC 46
OFF	D.B.	340	60-61
CKD	D.C.L.	SHEET 3 OF 3	DATE 1/15/2005
			DWG D04-133P